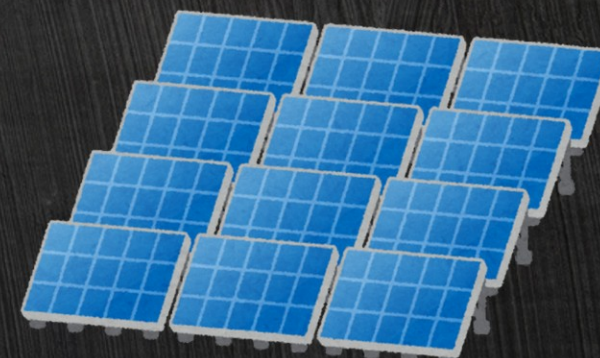
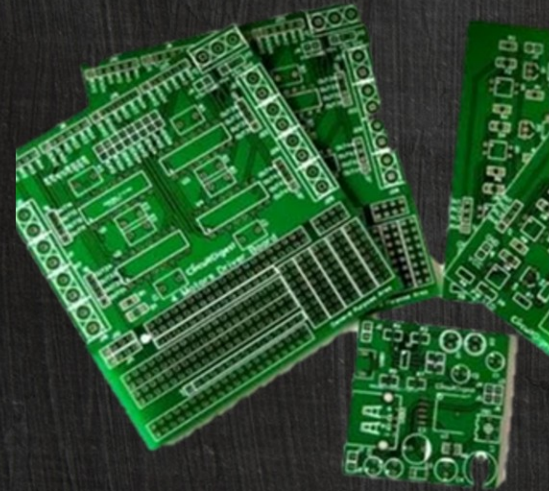


Chhattisgarh
Business Made
Easy



WHAT MAKES A GREAT BIRYANI?

- The rice?
- The spices?
- The ingredients?
- The chef?





THE PERFECT BASE

Central Location

Reach 600+ Mn users

Within ~100 minutes from major Indian cities

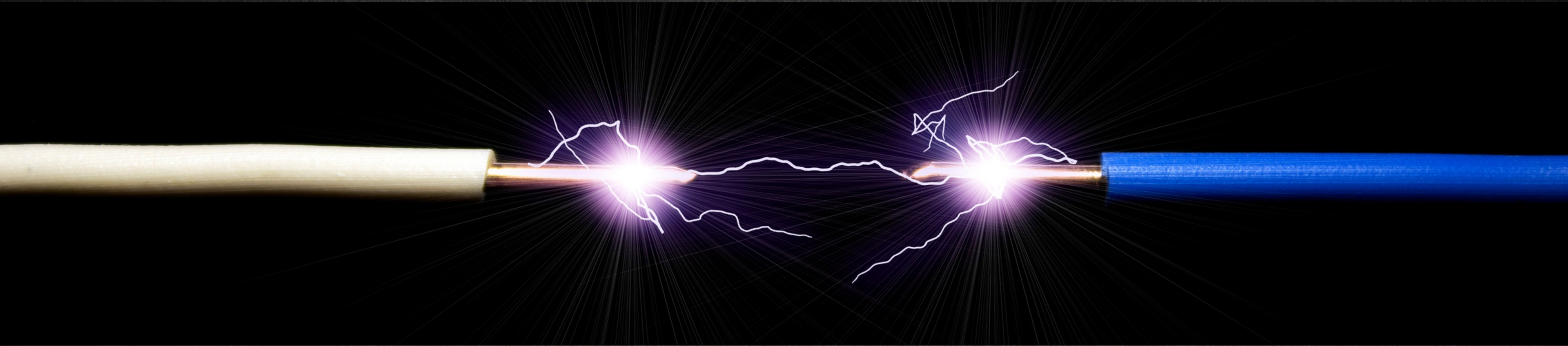
Robust Economy

25x growth in 25 years

High Performer

LEADS 2025, DPIIT

HEAT THAT KEEPS IT COOKING



26 GW+ to power datacentres, semiconductors, electronics & others

Uninterrupted & Quality Power

Zero Power Cuts

HT Electricity tariff starting at **₹5.05 per unit**

THE FINEST INGREDIENTS

GI Tagged

Jeeraphool, Nagri Duraj Rice
Champa Silk Sarees & Fabrics

Medicinal Herbs & Minor Forest Produce

Leading Producer

Iron, Steel, Aluminium, Tin Concentrate

1st State to Auction

Gold mines & Lithium blocks





THE GRAND HANDI

Nava Raipur

India's first greenfield smartcity
AI and Semiconductor SEZ
Central India's largest Pharma Park
90 acres earmarked for IT
EMCs

New Industrial Areas & Gems and
Jewellery Park developed under **PPP**

THE MASTER CHEF

FIRST STATE TO ENACT RIGHT TO SKILL

Institutes of National Importance

IIT, IIM, AIIMS, NIT, IIIT, NLU, NIFT

50,000+ Graduates Every Year

Affordable Workforce



KITCHEN MANAGEMENT

REFORMS BUILT IN DNA

OneClick Single Window

130+ Services across 10 Departments

Chhattisgarh Jan Vishwas Act 2.0

279 Minor Offenses Decriminalized

Auto mutation of land records

Simplified land diversion

Home based registry

24x7 industries operations, with night shifts enabled for women



THE WINNING RECIPE

CHHATTISGARH INDUSTRIAL DEVELOPMENT POLICY 2024-30



Special package for 9 sectors

Thrust Sectors



₹1,000 Cr+ or 1,000+ jobs

Bespoke Incentives



Policy benefits applicable for SEZ

Special Economic Zones



35% with upto 1.5x employment booster

FCI Subsidy



50% for 5 years

Interest Subsidy

THE MAGIC DUM

Biryani is great when
everything comes together

Investment destinations
work exactly the same way!

CHHATTISGARH

Where Every Advantage Comes Together

SAMPLE CALCULATIONS

PHARMA

Total FCI	Rs 100 Cr (150 employment)
Plant and Machinery Investment	Rs 70 Cr
Land area assumed	5 acres at Rs 1 Cr/acre
Total Incentives	Rs 70.07 (70% of FCI)

S.NO	Incentives	Description	Amount (Rs Cr)
1	Fixed capital investment subsidy	38.5% of FCI, max limit Rs 66 Cr, disbursed in 6 equal instalments (including employment multiplier of 1.1 for 150 permanent employment)	38.5
2	Interest Subsidy	50%, up to Rs 20 Cr/year for 5 years	12.45
3	Electricity duty exemption	100% exemption for 12 years	2.02
4	Land related incentives	100% exemption on stamp duty, reimbursement of 50% of registration charges, land diversion fee exemption	0.46
5	ETP subsidy	50% of cost, up to Rs 1 Cr	1
6	EPF reimbursement	75% reimbursement for 5 years up to 2% of FCI per year	1.22
7	Employment generation assistance	20% of salary for 5 years (up to 7 years) for employees earning less than Rs 50,000/month	2.7
8	Training subsidy	One month's wage up to Rs 15,000 per employee	0.23
9	Establishment of R&D Centre	20% on plant & machinery and equipment, max 3 crore	3
10	Clinical trials reimbursement	50% of expense up to Rs 1 Cr per trial, max 5 trials	5
11	Subsidy for export certification	50% of expense up to Rs 15 Lakh per product, for 10 products	1.5
12	Other subsidies	Incentives on project report, quality certification, technical patent, technology purchase, water & energy audit fee, export related to transport, etc	2
TOTAL			70.07

SAMPLE CALCULATIONS

ELECTRONICS

Total FCI	Rs 250 Cr (250 employment)
Plant and Machinery Investment	Rs 200 Cr
Land area assumed	5 acres at Rs 1 Cr/acre
Total Incentives	Rs 166.16 (66% of FCI)

S.NO	Incentives	Description	Amount (Rs Cr)
1	Fixed capital investment subsidy	42% of FCI, disbursed in 6 equal yearly instalments, max Rs 180 Cr (including multiplier of 1.2 on 250 permanent employment generation)	105
2	Interest Subsidy	50%, upto Rs 20 Cr per annum for 5 years	35.58
3	Electricity duty exemption	100% for 12 years	8.06
4	Land related incentives	100% exemption on stamp duty, Reimbursement of 50% of registration charges, 50% exemption on land diversion up to 50 acres	0.44
5	EPF reimbursement	75% reimbursement for 5 years up to 2% of FCI per year	2.7
6	Employment generation subsidy	20% of wages for 5 years for employees earning less than Rs 50,000	4.5
7	Training subsidy	One month's wage up to Rs 15,000 per employee	0.38
8	Establishment of R&D Center	20% on plant & machinery and equipment, max Rs 3 Cr	3
9	Export Certification	50% up to Rs 15 lakhs per product for 10 products	1.5
10	Other incentives	Subsidy for project report, quality certification, technical patent, technology purchase, water and energy audit fee reimbursement, zero waste incentive, new electricity connection charges, transport subsidy for export	5
TOTAL			166.16

SAMPLE CALCULATIONS

DEFENCE

Total FCI	Rs 400 Cr (250 employment)
Plant and Machinery Investment	Rs 340 Cr
Land area assumed	20 acres at Rs 0.5 Cr/acre
Total Incentives	Rs 251.21 Cr (63% of FCI)

S.NO	Incentives	Description	Amount (Rs Cr)
1	Fixed capital investment subsidy	42% of FCI, disbursed in 6 equal yearly instalments, max Rs 180 Cr (including employment multiplier of 1.2 on 210 permanent employment generation)	168
2	Interest Subsidy	50%, up to Rs 20 Cr per annum for 5 years	46.72
3	Electricity duty exemption	100% for 12 years	16.13
4	Land related incentives	100% exemption on stamp duty, Reimbursement of 50% of registration charges, 50% exemption on land diversion up to 50 acres	0.92
5	New Electricity Connection	50% of cost (except security deposit)	0.05
6	EPF reimbursement	75% reimbursement for 5 years up to 2% of FCI per year (calculated on average salary of Rs 15,000 per month)	2.03
7	Employment generation subsidy	20% of wages for 5 years for employees earning less than Rs. 50,000	4.5
8	Training subsidy	One month's wage up to Rs 15,000 per employee	0.38
9	Other incentives	Subsidy on transport related to export, project report, quality certification, technical patent, technology purchase, water and energy audit fee	8
10	Establishment of R&D Centre	20% on plant & machinery and equipment, max Rs 3 Cr	3
11	Export Certification	50% up to Rs 15 lakhs per product for 10 products	1.5
TOTAL			251.21

SAMPLE CALCULATIONS

IT

Total FCI	Rs 100 Cr (400 Employment)
Land area assumed	5 acres at Rs 1 Cr/acre
Total Incentives	Rs 94.20 Cr (~94 % of FCI)

S.NO	Incentives	Description	Amount (Rs Cr)
1	Fixed capital investment subsidy	42% of FCI, disbursed in 6 equal yearly instalments, max Rs 72 Cr (Including multiplier of 1.2 for 400 Employment)	42
2	Interest subsidy	50% of Interest, upto Rs 20 Cr per annum for 5 years	13.42
3	Electricity duty exemption	100% for 12 years	5.13
4	New Electricity Connection Charges	50 percent reimbursement of the charges	0.1
5	Employment Generation Subsidy	20% of Salary paid to permanent CG domicile employee	23.52
6	EPF reimbursement	75% reimbursement for 5 years up to 2% of FCI	3.78
7	Training subsidy	One month's wage up to Rs 15,000 per employee, max limit 100% of FCI	2.1
8	Land Related	100% exemption on stamp duty	0.45
9	Other subsidies	Subsidy for project report, quality certification, technical patent & technology purchase (overall limited to 2% of FCI)	0.55
10	Special Industrial Investment Promotion	Purchasing P&M for establishment of new R&D: 20% Subsidy on Expenses Export Certification: 50% of the application fee, with a maximum of Rs 15 lakh per product, for up to 10 products	3.15
TOTAL			94.2

SAMPLE CALCULATIONS

GCC

Total FCI	Rs 100 Cr (500 Employment)
Land area assumed	5 acres at Rs 1 Cr/acre
Total Incentives	Rs 137.38 Cr (~137 % of FCI)

S.NO	Incentives	Description	Amount (Rs Cr)
1	Fixed capital investment subsidy	45.50% of FCI, disbursed in 6 equal yearly instalments, max Rs 78 Cr (Including multiplier of 1.3 for 500 Employment)	45.5
2	Interest subsidy	40% for 5 years, up to Rs 2 Cr p.a.	9.25
3	Electricity duty exemption	100% for 12 years	2.88
4	Operational Expenditure Subsidy	20% of Opex up to 2% of FCI	10
5	Payroll Subsidy	20% of Salary paid to permanent CG domicile employee	50
6	EPF reimbursement	75% reimbursement for 5 years up to 2% of FCI	10
7	Skill Development Exp. Reimbursement	50% of Training Expenses upto 50,000 per employee	8.75
8	Land Related	100% exemption on stamp duty; 50% exemption on Registration fee	0.45
9	Other subsidies	Subsidy for project report, quality certification, technical patent, technology purchase & Water and energy efficiency expenditure reimbursement (overall limited to 2% of FCI)	0.55
TOTAL			137.38

SAMPLE CALCULATIONS

DATA CENTRE

Total FCI	Rs 500 Cr (250 Employment)
Land area assumed	5 acres at Rs 1 Cr/acre
Total Incentives	Rs 312.84 Cr (~63 % of FCI)

S.NO	Incentives	Description	Amount (Rs Cr)
1	Fixed capital investment subsidy	42 % of FCI, disbursed in 6 equal yearly instalments, max Rs 180 Cr (including multiplier of 1.2 for 250 Employment)	180
2	Interest subsidy	50% for 5 years, up to Rs 20 Cr p.a.	67.12
3	Electricity duty exemption	100% for 12 years	48
4	New Electricity Connection Charges	50 percent reimbursement of the charges for new electricity connections	0.1
5	Employment Generation Subsidy	20% of Salary paid to permanent CG domicile employee	10.5
6	EPF reimbursement	75% reimbursement for 5 years up to 2% of FCI	2.36
7	Training subsidy	One month's wage up to Rs 15,000 per employee, max limit 100% of FCI	0.66
8	Land Related	100% exemption on stamp duty, 50% on Registration Fee & 50% up to 50 Acre land for land diversion charges	0.56
9	Other subsidies	Subsidy for project report, quality certification, technical patent & technology purchase (overall limited to 2% of FCI)	0.55
10	Special Industrial Investment Promotion	20% Subsidy on Expenses for Purchasing P&M for establishment of new R&D	3
TOTAL			312.84



Chhattisgarh
Business Made
Easy

THANK YOU



Scan to know more

Department of Commerce and Industries
Government of Chhattisgarh

Email: secy-commind.cg@gov.in | www.invest.cg.gov.in

      Invest Chhattisgarh